

INFORMATION

Crystal Reports Server



Crystal Reports Server Benefits:

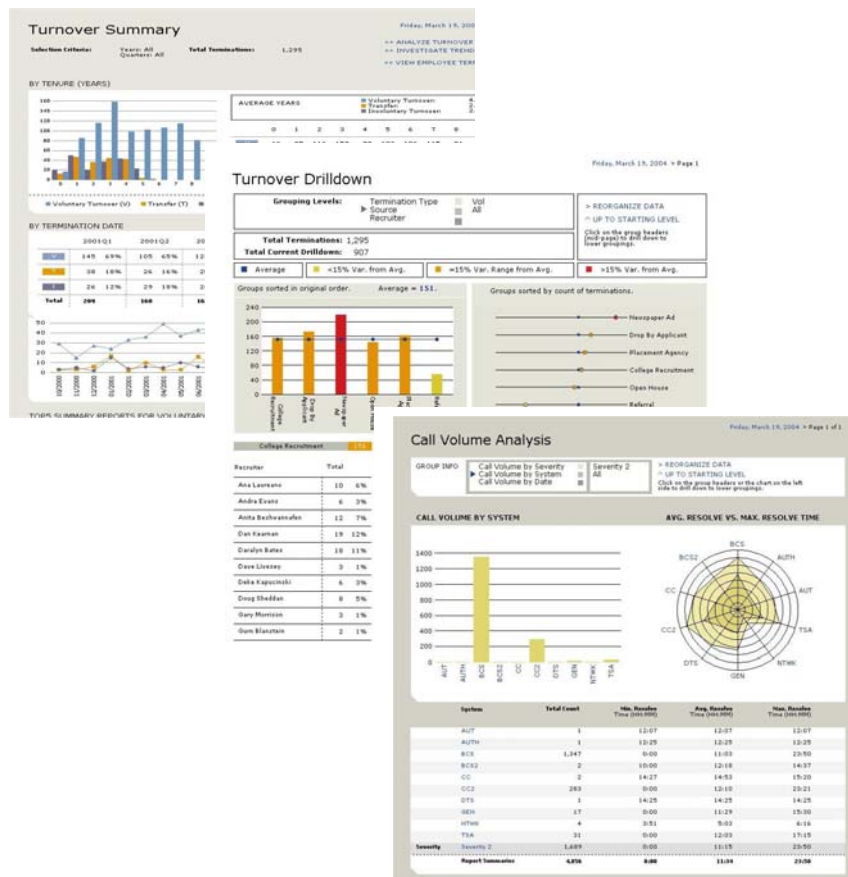
- Increased report development productivity
- Reduced costs with delivering information
- Improved decision-making with more targeted information
- Increased accuracy and quality of information

Overview

New to the Crystal Reports product suite, Crystal Reports Server is a complete reporting solution that helps small and medium-sized businesses create, manage, and deliver reports - via the web or embedded in enterprise applications. It addresses all steps in the reporting process - from data access and report design, to report management and delivery, to report integration with portals and applications. Plus, it includes Crystal Reports XI, the world standard for report creation, making it easy for existing or new Crystal reports to be shared over the web. One year of technical support and maintenance is also included for rapid deployment and peace of mind.

Product features include:

- Data access and report design
- Report management and delivery
- Portal and application integration
- Easy scalability for increased application longevity

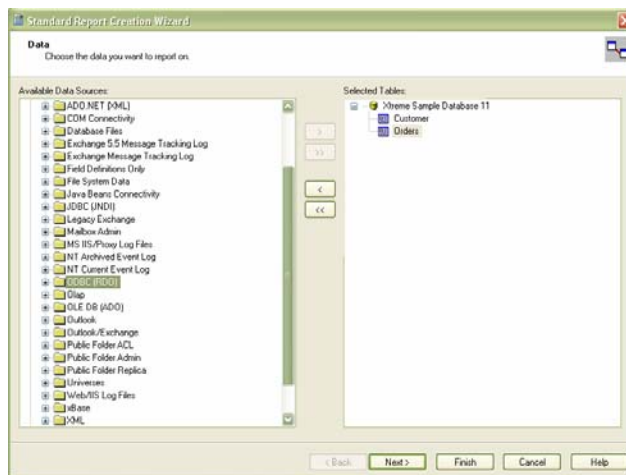


Create any type of report and publish it over the web.

Data Access and Report Design

Data Access

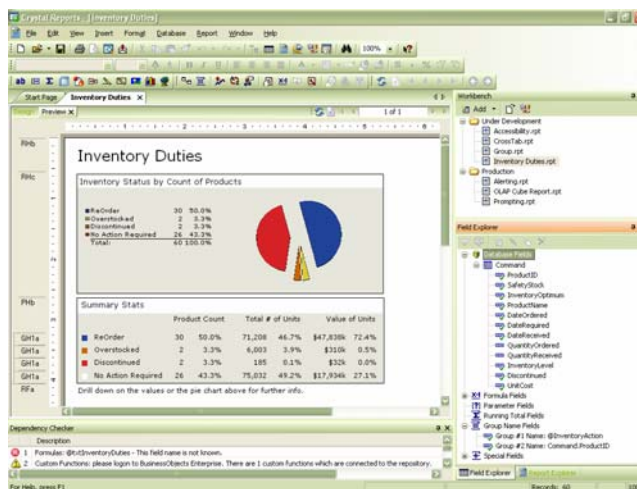
Crystal Reports gives you flexible control over data connectivity so you can easily satisfy the ever-changing requirements of end-users. Connect to the data you need with powerful data drivers and flexible data access. You can set up business views as a data abstraction layer to ease the process of connecting to multiple data sources and to reduce the hassle of migrating reports from development to production.



Select from more than 35 data drivers for direct, code-free access to almost any relational, OLAP, XML, or in-memory data.

Report Design

The open design environment within Crystal Reports provides a large degree of flexibility and control so you can create highly formatted, feature-rich reports that meet the information needs of your users. With Crystal Reports you can create almost any report imaginable – from financial statements and top N sales reports to mailing labels. It's easy to give your reports a professional, pixel-perfect appearance (without tedious coding) by using a complete set of layout and design controls, including charts, maps, grouping, and sorting.

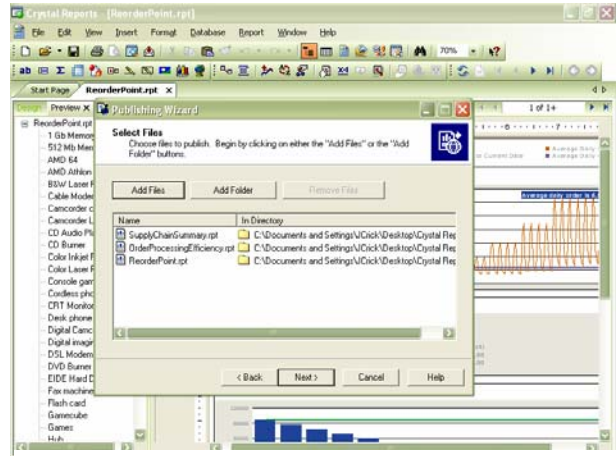


Use the updated point-and-click designer to create reports and alleviate intensive coding.

Report Management and Delivery

Web Delivery

Crystal Reports Server offers a complete web reporting solution that makes it easy and efficient for you to deliver reports to your end users. Use the Report Publishing Wizard to upload any existing Crystal reports to the web, setting report scheduling and security options at the same time. Then, provide your end users with a single URL for instant and secure access to a customizable portal for report viewing and interaction. Pre-built portal integration kits are also available to help expedite customization into your existing portal interface.



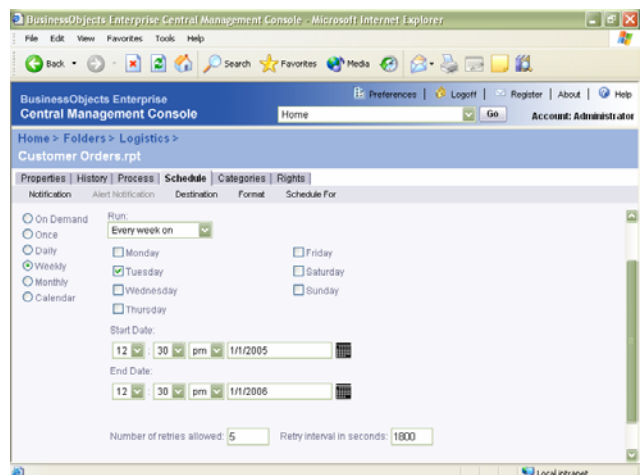
Publish any existing Crystal report to the web for secure viewing and interaction.

Security

Crystal Reports Server provides you with granular object, user and data-level security. You can specify the information each user can access and the actions each user can perform on a particular report. For example, you can give all marketing employees access to the Marketing Folder of reports and allow only the managers to see two additional reports within that folder. And, you can enable the managers to schedule reports, yet give individual employees on-demand report viewing rights only.

Scheduling

Crystal Reports Server includes flexible scheduling capabilities to ensure that information can be processed efficiently when and where you need it. Schedule reports based on events – such as a data warehouse update – or specific business calendars that reflect your company's financial calendar. You can also grant end users the right to schedule reports at specific times such as nth day of the month or every Monday, in specific formats such as PDF and Excel, and to specific printers. Related reports can be packaged together for simultaneous processing.



Schedule reports to process at specific times to efficiently deliver reports to your end users.

Report Processing Services

To support high volume reporting, Crystal Reports Server uses central services-oriented architecture, comprised of a set of report processing services for speed-of-thought information access. Innovative page-on-demand technology helps expedite processing by serving up only those pages requested by end users and by presenting data and then images for the requested page. On-demand caching helps maintain fast performance levels by reusing common content requests to service multiple users.

Management

Crystal Reports Server includes a customizable, web-based administration console that makes it easy to set up, configure, and manage your reporting system remotely. Use it to set up users and group accounts with security. You can also configure individual reporting services and add new licenses.

Portal and Application Integration

A key requirement for any enterprise reporting solution is the ability to easily integrate into existing systems, applications, and infrastructure. Crystal Reports includes extensive software developer kits to easily integrate report viewing, printing, and exporting into Java, .NET, and COM applications. Additional interactive application programming interfaces (APIs) are available in Crystal Reports Server for end user report modification and creation at runtime. And, as a central reporting server, you can create multiple applications in Java, .NET or COM and link them to a single report repository.

Easy Scalability for Increased Application Longevity

Reporting is the foundation for future Business Intelligence projects. Crystal Reports is an integral part of our unified BI product suite from Business Objects. Based on the same underlying infrastructure (BusinessObjects Enterprise) Crystal Reports provides for a seamless extension of your existing deployments to BI. Should your needs evolve to require query, analysis, dashboards, scorecards, OLAP, or data integration capabilities – you can easily migrate your system from Crystal Reports to BusinessObjects Enterprise. Or, if you simply need to scale your Crystal Reports Server deployment across multiple servers for mission-critical, fault-tolerant reporting – you can easily migrate to BusinessObjects Enterprise with minimal code changes.

To find out about the complete Crystal Reports feature set, and the exciting new features available in Crystal Reports XI, visit:

<http://www.businessobjects.com/products/reporting/crystalreports/default.asp>

► www.businessobjects.com

Americas
Tel: +1 800 877 2340

Asia-Pacific
Tel: +65 6887 4228

Europe, Middle East, Africa
Tel: +33 1 41 25 21 21

Japan
Tel: +81 3 5447 3900

Business Objects owns the following U.S. patents, which may cover products that are offered and licensed by Business Objects: 5,555,403; 6,247,008 B1; 6,578,027 B2; 6,490,593; and 6,289,352. Business Objects and the Business Objects logo, BusinessObjects, Crystal Reports, Crystal Enterprise, Crystal Analysis, WebIntelligence, RapidMarts, and BusinessQuery are trademarks or registered trademarks of Business Objects SA or its affiliated companies in the United States and other countries. All other names mentioned herein may be trademarks of their respective owners. Copyright © 2005 Business Objects. All rights reserved.