

# System Manager

[ BENEFITS ]

**Configure your solution quickly and easily**

Get started fast with your Microsoft Dynamics GP solution. Efficient set-up processes and easy-to-use navigation tools help you personalize your solution to meet your business needs quickly and with minimal effort.

**Enhance usability**

Provide users with a seamless working experience with a familiar Microsoft Office interface, list-based navigation, and streamlined menus.

**Access information instantly**

Instantly create queries against your data or access more than 100 modifiable SmartList queries to find customer, vendor, inventory, or other vital information, and export query results to Microsoft Office Excel® 2003 and Microsoft Office Word 2003.

**Give employees immediate access to relevant information**

Customizable role-based home pages provide employees in professional services, distribution, retail, and public sector companies with a dashboard tailored to their daily tasks.

**Put your information to work**

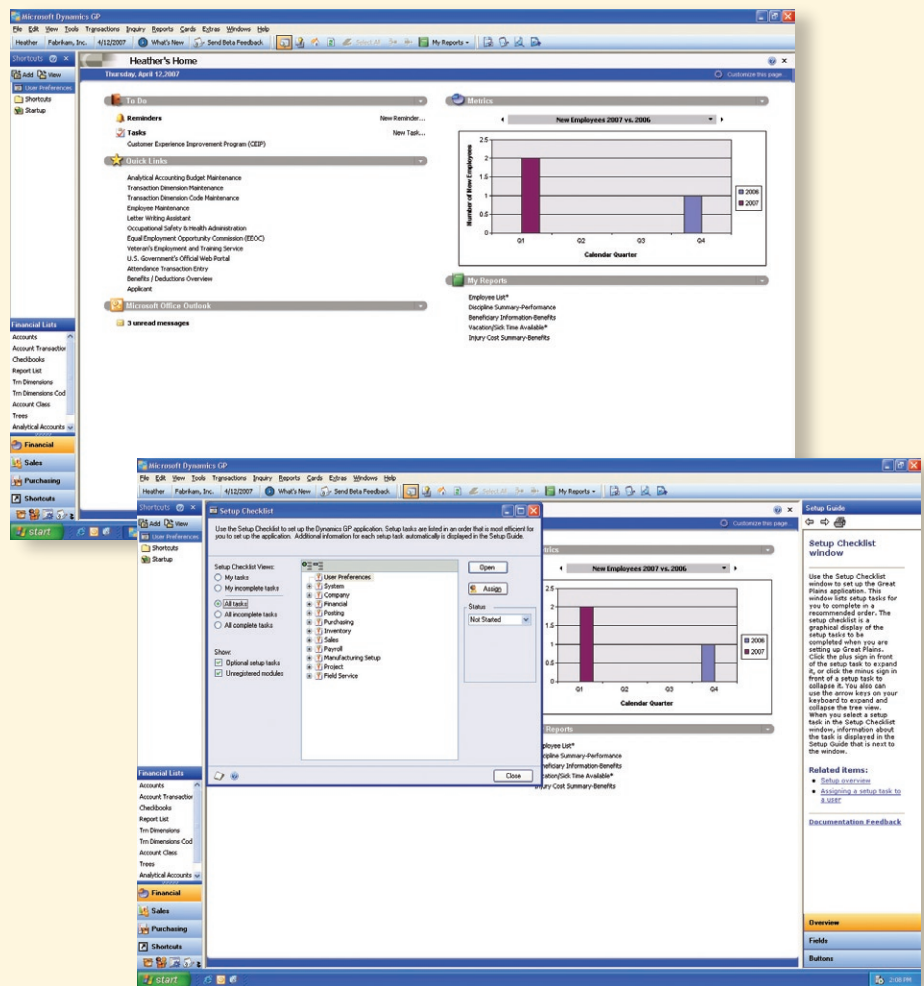
Export query results to Microsoft Office Excel 2003 and Microsoft Office Word 2003 with a single click, so that you can update spreadsheets quickly or create mailing lists for sales and marketing initiatives.

**Expand your ability to recall data**

Easily manage and configure smart tags in your Microsoft Office System applications with user-interface icons that automatically recognize customer names and other vital references and link you to further information within Microsoft Dynamics GP.

**Make your business processes work for you** with the backbone of Microsoft Dynamics™ GP, System Manager. Boost productivity by configuring your system to meet your business needs, sharing information across your organization, and by providing employees with an intuitive work environment, streamlined navigation, and productivity tools that speed access to information and let you take advantage of integrations with Microsoft Office System applications.

**CUSTOMIZABLE ROLE-BASED HOME PAGES** provide employees with a dashboard tailored to their daily tasks, including reminders, KPIs, and links to specific reports, features guides, windows, or SmartLists.



**PROCESS-BASED CHECKLISTS** streamline setup and provide audit information to help users avoid missing any key steps and maintain user accountability.

### Intuitive Navigation across Your Solution

- List-based navigation helps employees quickly locate a record or report once and then select and perform actions against that record or report.
- Simplified system navigation includes an interface that shows buttons and paths only to those modules that an employee is authorized to use.
- Locate and launch reports from across your system quickly—including Microsoft Dynamics GP Report Writer reports, SmartLists, and SQL Reporting Services reports. Restrict and perform multiple actions for reports in the list.
- Use My Reports to create a list of the reports you use most often. Customize them as needed and store for one-click access.

Microsoft Dynamics GP captures the look and feel of Microsoft Office Outlook® 2003, along with list-based navigation and streamlined menus that provide everyone in your organization with a clean, intuitive interface. Whether your employees are working in Microsoft Dynamics GP or Microsoft Office, they'll have a seamless user experience that boosts productivity and minimizes training costs.

### Rich Microsoft Office Integration

- Share query and budgeting data with Excel 2003 and Word 2003, with the ability to make full use of Excel-based reporting capabilities and export Microsoft FRx reports directly to Excel pivot tables.
- Consolidate Excel 2003, Word 2003, and Microsoft Office PowerPoint® 2003 documents in FRx reporting packages to deliver a single file that preserves all formatting and properties for each document type.
- Use the Letter Writing Assistant to build customized communications in Word 2003.
- Send customer statements, invoices and other documents via e-mail through Outlook 2003 and eliminate time-wasting and expensive paper mailing processes.
- Enter vacation requests through Business Portal and have them automatically added to your Outlook calendar.
- Easily attach maps and directions for sales, delivery, and service call routes with single-click access to Microsoft MapPoint®.
- Link to Microsoft Dynamics GP data directly from within Microsoft Office applications, using smart tags to speed access to customer, vendor, inventory, general ledger account, and employee information.

### Information Tailored to Specific Industry Roles

Customizable role-based home pages provide employees in professional services, distribution, retail, and public sector companies with a dashboard tailored to their daily tasks — including reminders, KPIs, and links to specific reports, feature guides, windows, or SmartLists. More than 20 customizable roles include:

- Accounting Manager
- Grant Manager
- Warehouse Manager
- Production Manager
- Payroll Administrator
- Shipping and Receiving
- Human Resources Manager
- Accounts Receivable Administrator
- Accounts Payable Coordinator
- Order Processor
- Purchasing Agent
- Bookkeeper
- Production Planner
- IT Operations Manager
- Credit & Collections Manager
- Shop Supervisor
- Customer Service Rep
- Accountant
- Purchasing Manager
- Operations Manager
- Materials Manager
- Dispatcher

[ FEATURES OVERVIEW ]

<b>Setup Checklists</b>	Streamline setup with a clearly defined setup structure, a suggested order for completing setup steps, and the ability to assign windows or groups of windows to users for completion.
<b>Intuitive User Interface</b>	Initiate tasks quickly and easily using the intuitive navigation and user interface.
<b>Mass Deployment</b>	Create an installation package for a customized, configured version upgrade that can be installed across the organization by running a single file. Partners and IT staff can then use familiar tools and applications to push the deployment out to all clients.
<b>Automatic Client Updates</b>	Select, approve, and post Service Packs for automatic deployment across all client workstations. Employees are notified by e-mail alert when an update is posted.
<b>Small Business Server Integration</b>	Integrate your Microsoft Dynamics GP Standard solution with Microsoft Windows® Small Business Server 2003, ensuring quick setup and one-click installation.
<b>Shortcuts</b>	Improve productivity by grouping commonly used tasks in a convenient shortcut navigation bar.
<b>To-do Lists</b>	Build online to-do lists and routine checklists for multi-step tasks.
<b>Integration with Reporting Tools</b>	Integrate seamlessly with Report Writer and Microsoft SQL Reporting Services to create professional-looking reports containing the exact information you need.
<b>Online Contact Tools</b>	Attach Internet addresses to employee records, items, customers, and vendors.
<b>Notes</b>	Attach detailed information to master records and transactions for improved control and audit capabilities.
<b>Modify Data Entry Windows</b>	Use Modifier with Microsoft Visual Basic® for Applications (VBA) to add business-specific functions into data entry and inquiry windows.
<b>Reminders</b>	Schedule task reminders, and then assign reminders to specific users for follow-up actions.
<b>Type Ahead</b>	Auto-fill customer IDs, shipping methods, Tax IDs and any other field that has an associated lookup window in Microsoft Dynamics GP.
<b>Business Alerts</b>	Use business alerts to automatically warn a pre-defined list of decision makers with a customized e-mail message when a specified business condition, such as reaching a checking account balance, is met.

[ FEATURES OVERVIEW ]

## Microsoft Office SmartTag

### Link to Microsoft Dynamics GP Data

Drill back instantly to key information with context-sensitive links between Microsoft Office documents and accounting and business management records.

### Smart Tag Viewer

Enable users who don't run Microsoft Dynamics GP applications to access information through the Smart Tag Viewer.

### Access Control

Leverage your existing Microsoft Windows NT® authentication routines, reducing administration and ensuring only authorized personnel have access to your business management information.

### User Permissions

Set up access rights easily, defining permissions by individual or group and type of information.

## SmartLists

### Create and Modify Lists

Instantly create sophisticated queries to find detailed customer, vendor, general ledger, inventory, employee, and salesperson information.

### Save and Share Lists

Share saved queries with others in the organization.

### One-Click Export to Excel 2003 and Word 2003

Quickly update spreadsheets, create letters and reports with the Letter Writing Wizard, or create mailing lists for sales and marketing initiatives with a single click to import queries into Excel 2003 and Word 2003.

### SmartList Favorites

Access more than 100 SmartList queries that make it even easier to track and analyze the information that helps you run your business better.