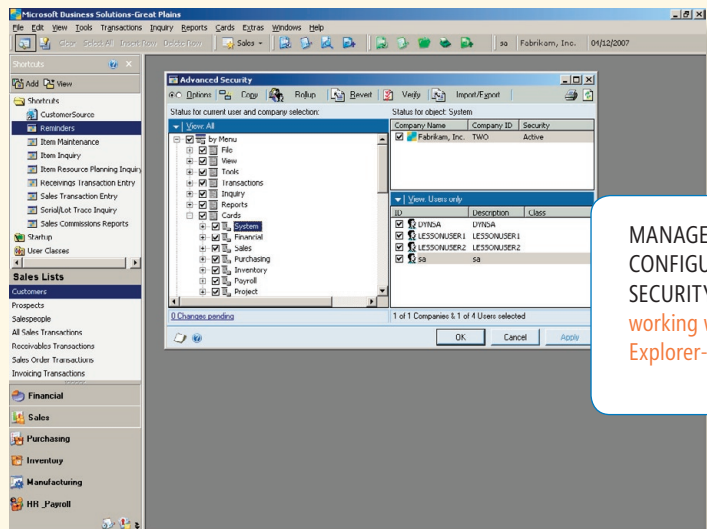


## Security Management

With powerful security management capabilities presented in a clear, interactive format, you can control access to data, applications, and tools; reduce IT administration; and help maintain high levels of protection for your business system.



MANAGE AND CONFIGURE USER SECURITY easily by working within a familiar, Explorer-style interface.

### Reduce IT administration

Manage user security quickly and effectively with powerful, easy-to-use tools that simplify configuration and management processes, yet provide high levels of protection for your system.

### Solve problems on the fly

Identify and fix security errors quickly using interactive dialogs that help eliminate the need to change login user and minimize IT administration.

### Apply security with flexibility

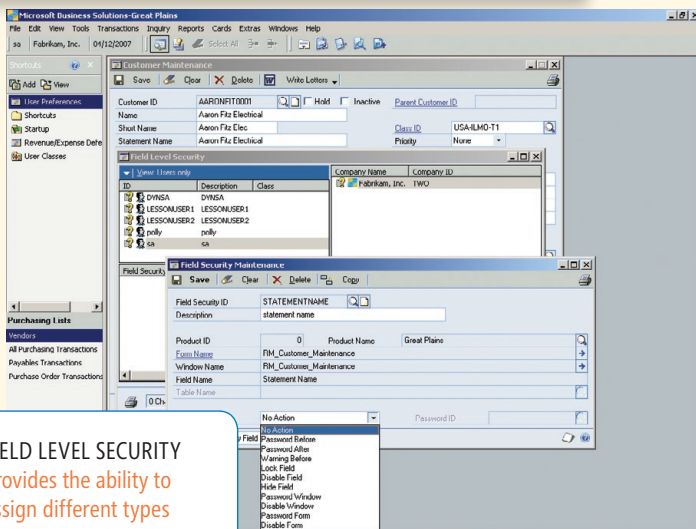
Apply security restrictions with ease and flexibility using a single Explorer-style interface that gives you complete control over form, window, field, and report access, as well as a host of other permission controls.

### Integrate your security

Control security easily across Microsoft® Business Solutions—Great Plains® from a single interface, with seamless integration between Security Management and other applications.

### Improve productivity

Reduce errors and empower employees to focus on essential tasks by disabling or even hiding fields that they don't need to view.



FIELD LEVEL SECURITY provides the ability to assign different types of security to fields throughout Great Plains.

BENEFITS

# Security Management



## FEATURES OVERVIEW

### Advanced Security

- Control security easily through a multi-user, multi-company, and multi-dictionary Explorer-style interface.
- Manage form, window, table, and report access, as well as tools and document access, posting permissions, and SmartList Objects.
- Configure settings so that changes made to a user class automatically roll down to users assigned to that class.
- Assign security settings to an individual user and selectively apply those settings to an overall class.
- Easily copy security settings between users and companies, and between users and classes.
- Locate information quickly when access is denied for a window or report, and grant temporary or permanent access without needing to change the login user.
- Identify security errors quickly using interactive dialogs, with options to fix problems on-the-fly without needing to change the login user.
- View security settings with customized user classes and grouping. A special view groups together all customized resources into a single area.
- Print security reports, and export and import security settings to save time if a reset is needed.

### Field Level Security

- Control access to data throughout Great Plains by managing security restrictions on individual data fields, windows, and forms.
- Use flexible tools to define how you want security restrictions managed: Password-protect, disable, or hide fields, windows and forms completely, and assign those security restrictions on a user or class basis.
- Easily manage user access to individual fields, windows and forms with clear user and class controls and a straightforward, intuitive interface.

Security Management components are sold separately. Field Level Security is available for Microsoft Business Solutions-Great Plains Professional only.